

AN
INTERNATIONAL
SYMPOSIUM — WORKSHOP

2015

Presents

**THE
ART
OF 3D
STEREO
MEDIA**

SYMPOSIUM

APRIL

22nd LECTURES

23rd WORKSHOP

24th WORKSHOP

04/2015

VENUE :
SCHOOL
OF ART
DESIGN
& MEDIA
(NTU)

PRESENTED BY



NANYANG
TECHNOLOGICAL
UNIVERSITY



PRO GRAVI

THE ART OF 3D STEREO MEDIA

AN INTERNATIONAL
SYMPOSIUM &
WORKSHOP

2015

22
23
24 APRIL

DAY 1

9:00 am - 6:30 pm

WEDNESDAY 22TH APRIL

VENUE : ADM

3D STEREO THEATER 2ND FLOOR

SYMPOSIUMS & DEMOS

TIME	
09:00 -09:30	Registration
09:30 -10:00	Tea & Coffee
10:00 -10:10	Welcome by Dean Alan Chan
10:10 -10:20	Welcome by Prof. KK Luke
10:25 -10:45	Keynote Sorensen Vibeke, Professor and Chair, School of Art, Design and Media, NTU Title: 3 Dimensions: A historical overview of stereographic and spatial art
10:50 -11:10	Keynote Kathleen Schroeter, Executive Manager "3D Innovation Center", Fraunhofer Title: Tomorrow is now – the World of Immersive Imagine Technologies
11:15 -11:35	Keynote Joséphine Derobe Cross Channel Film Lab France Title: Exploration and use of 3D as a creative and sensory medium / France
11:40 -12:00	Ludger Pfanz, Head of BEYOND Festival HfG/ZKM Title: The dynamic screen: The futures and innovations in digital storytelling
12:00 -01:00	Lunch - networking
01:00 -01:20	Keynote Paul Bourke, Director iVEC at The University of Western Australia Title: Enhancing research with new and emerging presentation technologies – A practical investigation
01:25 -01:45	Alexei Sourin, Associate Professor, School of Computer Engineering, NTU Title: Tangible Images
01:50-02:10	Keynote Sönke Kirchof, CEO "real life film international" Title: "Hybrid 3D" - the future for producing 3D?
02:15-02:35	Keynote Yulu Wang, Member China Television Artists Association / CTAA 3D Council, China Title: 3D's internationalization (from China to the world)
02:40-03:00	Ben Shedd, Professor, School of Art, Design and Media Title: Behind the Scenes making IMAX and OMNIMAX films.
03:00-03:30	Coffee Break
03:35-03:55	Jason Maroothynaden, Deputy Director, Head of Tech. (Medical Education & Innovation in Simulation, LKC Medicine) Title: Augmented Reality as a Tool to Deliver e-Learning based Blended Content in and out of the class-room
04:00-04:20	Mark Chavez, Asst Prof, School of Art, Design and Media Title: A Proposed Design Structure for Interactive Learning Experiences
04:25-04:40	Ei-Leen Tan Title: Digital Planetarium – a new experience at Science Centre Singapore
04:45-05:10	Benjamin Seide, Assoc Prof, School of Art, Design and Media Title: The Making of Hugo

05:15-05:35	Elke Reinhuber, Asst Prof, School of Art, Design and Media Title: The Make-Believe of Immersive Media
05:40-06:00	Biju Dhanapalan, Assoc Prof, School of Art, Design and Media Title: Suppandi: An experiment in crafting the film language and narrative in stereoscopy
06:05-06:30	Peer M. Sathikh, Asst Prof, School of Art, Design and Media Title: Fun products of 3D vision

06:30 End of Day 1

DAY 2

9:00 am - 5:00 pm

THURSDAY 23TH APRIL

VENUE : ADM

ART 1-17 SOUND SUITE 1

TIME	
09:00 -09:30	Registration
09:30 -10:00	Tea & Coffee
10:00 -11:00	Joséphine Derobe: Exploration and use of 3D as a creative and sensory medium II
11:00 -11:30	Demo 1 Laurent Fabry, Director Asia Pacific, Alioscopy Title: 3D Experience- Alioscopy Singapore
11:30 -12:00	Demo 2 Philip Anthony Surman (Dr) Researcher, LUMINOUS! NTU EEE Title: Glasses-free 3D Display development in the Advanced Displays Laboratory Jin Siew Lim, Program Manager 3D Displays NRF CRP Luminous! Centre of LUMINOUS! NTU Advanced Displays Laboratory School of Electrical and Electronic Engineering, Nanyang Technological University, Head tracked 3D Window.
12:00 -01:00	Lunch - networking
01:00 -03:00	Joséphine Derobe: 3D cinematographic grammar and example of research and experimentation in creative 3D (Mise-en-scène, scenography, rhythm, editing, staging the frame) SBS experts and CCFL video experiments of 4 directors
03:00 -03:30	Coffee Break
03:30 -05:00	Sönke Kirchof, Workshop on using the STAN (Stereoscopic Analyzer) Software
05:00 -06:00	Q&A
05:00	End of Day 2

WORKSHOPS

DAY 3

9:00 am - 5:00 pm

FRIDAY 24TH APRIL

VENUE : ADM

ART 1-17 SOUND SUITE 1

TIME	
09:00 -09:30	Registration Workshop
09:30 -10:00	Tea & Coffee
10:00 -12:00	Joséphine Derobe: "First Steps Using Live 3D" Creative field of 3D (explaining first notions for stereoscopy on screen with the material, show why we need a mirror rig)
12:00 -01:00	Lunch - networking
01:00 -02:00	Guests Visit to Institute for Media Innovation Immersive Room
02:00 -02:30	Exercise (aim in experimenting with the notion of "presence" and the way to play)
02:30 -03:00	Coffee Break
03:00 -05:00	Exercise Continues
05:00	End of Day 3

WORKSHOPS

SPEAKERS

AN INTERNATIONAL
SYMPOSIUM &
WORKSHOP

THE ART OF 3D STEREO MEDIA

2015

INTERNATIONAL KEYNOTE SPEAKERS



Joséphine Derobe Lead Stereographer, consultant Cross Channel Film Lab France

Joséphine Derobe works on 3D projects as director of stereoscopy, stereographer and 3D consulting for cinema, video art and tv broadcast. She conducts lectures and workshops for 3D international events and at universities. Currently, she works as a director of stereography with "New Road Movies" and award winning German director Wim Wenders on upcoming 3D architectural series, 6X26min for TV and cinema.

jderobe@yahoo.fr
www.khamlaiprod.com



Paul Bourke Director of the iVEC facility at The University of Western Australia

Paul Bourke is the director of the iVEC facility at The University of Western Australia. As a visualisation researcher at UWA, Paul has worked in organisations where he concentrated on architectural, brain/medical, and astronomy visualisation. Of particular interest is the application of novel and emerging data capture and display technologies - such as those that leverage the capabilities of the human visual system.

paul.bourke@gmail.com
paul.bourke@uwa.edu.au
<http://paulbourke.net/>



Sönke Kirchof CEO "reallifefilm international"

Sönke Kirchof is founder and CEO of "reallifefilm international GmbH", established in 2006, based in Berlin and Hamburg, Germany. He works as a producer, stereographer and consultant for international projects. Kirchof and his company are highly specialized in immersive filmmaking from project development to distribution- from stereoscopic 3D and VR content creation to 360° projection deliveries.

soenkekirchof@reallifefilm.com
www.reallifefilm.com



Ludger Pfanz Head of BEYOND Festival HfG/ZKM, Center for Art and Media ZKM Karlsruhe

Ludger Pfanz is a director and producer, known for his internationally acclaimed works „Greenpeace vs Shell“, „Der Schwarzarbeiter“, and „Las Américas“. He is head and founder of "Expanded Cinema 3Digital Laboratory", the "3D Alliance Karlsruhe", the international festival "BEYOND", the international academic "3D Consortium" and the international symposium "Future Cinema-Future TV: 3D and BEYOND".

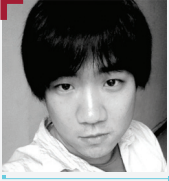
pfanz@hfg-karlsruhe.de
<http://www.beyond-festival.com>



Kathleen Schröter Executive Management 3IT & CINIQ-Center Fraunhofer Heinrich Hertz Institute

Since 2007 Kathleen Schroeter has worked for the Fraunhofer Gesellschaft Institute, known for it's work on 3D technology development. She was head of the jury for the short film and documentary film competition at the BEYOND Film Festival 2013 and the host for BEYONDS first day of Symposium 2014. She is member of the EUNEMA Committee of the International 3D & Advanced Imaging Society.

kathleen.schroeter@hhi.fraunhofer.de
<http://www.3it-berlin.de/en/>



Yulu Wang International relationship dept, director, China Television Artist Association 3D Council

Yulu Wang graduated from the Central Drama Academy in Peking Film and Television Production Management Department, and then studied in Germany. He has worked for CCTV. Since 2012, he has been with the 3D council of the China Television Artists Association. He explores and develops international cooperation in 3D between the Chinese industry and the rest of the world.

Yulu.wang@ctaa3d.com
www.ctaa.org.cn

NTU INSTITUTES AND RESEARCH CENTRES



Yang Jianyu Associate Professor in Soochow University, Post-Doctoral Research Fellow in NTU

Jianyu is currently an Associate Professor in the Department of Signal and Control Engineering, Soochow University, China. He is also a Postdoctoral Research Fellow in the School of Electrical and Electronic Engineering, Nanyang Technological University. His current research interests include computer vision, pattern recognition and human-computer interaction.

School of Electrical and Electronic Engineering
<http://www.luminous.eee.ntu.edu.sg>



Jin Siew Lim Program Manager 3D Displays NRF CRP Luminous! Centre of LUMINOUS!

Graduated from the School of EEE in 1999, and a MS.c in Logistics from the School of MAE in 2005, Jianyu is actively bridging 3D applications with emerging 3D autostereoscopic displays, to bring about an evolution in today's 3D viewing experience. He led the setup of the Advanced Displays Laboratory in the School of EEE (as part of NRF CRP Program "Towards the Reality of 3D Imaging and Display" awarded in Oct 2013).

JSLim@ntu.edu.sg
<http://www.luminous.eee.ntu.edu.sg>



Dr Jason Maroothynaden PhD, MSc, BEng (Hons), DIC, ARSM

Deputy Director, Head of Technology in Medical Education and Innovation in Simulation, LKC Medicine.

Currently Deputy Director, Head of Technology in Medical Education and Innovation in Simulation, LKC Medicine (LKC). A core Team Based Learning facilitator and trainer consultant. He has joined the European Space Agency (ESA) working on the International Space Station (ISS) and Shuttle programs. Post ESA, trained as an educationalist.

j.maroothynaden@ntu.edu.sg
<http://www.lkcmedicine.ntu.edu.sg>



Alexei Sourin Associate Professor, School of Computer Engineering, NTU

Dr. Alexei Sourin is a tenured Associate Professor with the School of Computer Engineering at NTU. He holds a concurrent appointment of the Deputy Director of Fraunhofer IDM@NTU--The Fraunhofer Project Centre for Interactive Digital Media at NTU. His research interests are in function-based shape modeling, shared virtual environments, haptic interaction, web visualization, and virtual surgery.

assourin@ntu.edu.sg Web
<http://www.ntu.edu.sg/home/assourin>



Philip Anthony Surman School of Electrical and Electronic Engineering, NTU

Researcher, Advanced Displays Laboratory, LUMINOUS! Centre of Excellence for Semiconductor Lighting & Displays.

Dr Surman received his PhD from De Montfort University and has worked on the European Union-funded ATTEST and 3D Network of Excellence projects. He is presently the technical manager of the newly awarded CRP project 'Towards the Reality of 3D Imaging and Display' funded by the National Research Foundation (NRF).

psurman@ntu.edu.sg
<http://www.luminous.eee.ntu.edu.sg>



Mark Chavez

Assistant Professor, School of Art, Design and Media, NTU

Mark Chavez has worked in the animation industry for more than 30 years in many capacities, as a director, game art lead, technical director, and visual effects artist. He has worked on numerous Academy Award winning projects at major film studios (DreamWorks Animation and R&H Studios), and innovative interactive media projects. In the game industry, he established the first and best pipeline for motion capture.

chavez@pmail.ntu.edu.sg
<http://www.markchavez.guru/>



Ina Conradi Chavez

Associate Professor, School of Art, Design and Media, NTU

Ina Conradi is an award-winning new media artist. Referring to animated films as "unframed paintings", Ina's works innovatively combine digital animation and stereo to fit diverse media spaces. Her films have been screened internationally at the 3D Stereo Media Festival, 3D Beyond Festival ZKM, Ars Electronica Festival, Siggraph Asia, Brooklyn Film Festival, Anima Mundi, Dimension 3 Festival, amongst others.

inaconradi@ntu.edu.sg
www.inaconradi.com



Biju Dhanapalan

Associate Professor, School of Art, Design and Media, NTU

Currently Biju is Associate Professor at Art Design and Media (ADM) Singapore. He is one of India's leading visual effects directors, working in feature films, commercials, art installations and new media. He has designed and supervised animation and visual effects for over a hundred feature films, which has earned several nominations and awards. Biju has also been involved in stereoscopic projects across varied media.

biju@ntu.edu.sg



Lucas Jodogne

Senior Lecturer School of Art, Design and Media, NTU

An award winning cinematographer and art photographer, Jodogne has shown his work all over the world in galleries and museums. Over the course of 25 years, he has shot more than 160 films including commercials, corporate videos, art movies, short feature fiction films, and several long feature fiction films as a director of Photography. His films were represented in leading film festivals and many have received top awards.

lucasjodogne@ntu.edu.sg
www.lucasjodogne.net/



Peer M. Sathikh

Acting Associate Chair (Academic) School of Art, Design and Media, NTU

Peer Sathikh is presently Assistant Professor at the ADM. He obtained a Master of Design in industrial design from the Royal College of Art, London and a Master of Design in product design from Industrial Design Centre, Indian Institute of Technology, Mumbai. Peer has won several awards as design consultant at Inovasia, such as the Good Design Award 2004 from the Chicago Athaenuem, USA and the Singapore Design Award.

Peersathikh@ntu.edu.sg



Elke Reinhuber

Assistant Professor, School of Art, Design and Media, NTU

Reinhuber teaches and researches as an assistant professor at Nanyang University. In her current artistic research, Reinhuber investigates on the correlation between decisions and emotions and explores different strategies of visualisation and presentation, working with immersive environments, augmented reality and imaging technologies.

elke@ntu.edu.sg
<http://www.eer.de/>



Ben Shedd Professor, School of Art, Design and Media, NTU

Ben Shedd, Professor Digital Filmmaking at the School of Art, Design and Media, Nanyang Technological University, is an Academy Award winning documentary filmmaker. In parallel with his university teaching, he has produced and directed 33 films and videos, including three OMNIMAX giant screen dome films. Ben Shedd continues his EXPLODING THE FRAME research to develop a cinematic language for immersive spaces.

BShedd@ntu.edu.sg
www.benshedd.com



Benjamin Seide Associate Professor, School of Art, Design and Media, NTU

Benjamin Seide is dedicated to VFX and animation with over 15 years of professional experience in planning, supervision and realization of digital effects for commercials, music videos, broadcast design and feature films. As a VFX Supervisor and Creative Director, he designed immersing effects. Recently he finished his work on Tom Cruise's new blockbuster Oblivion and JJ Abraham's Star Trek - Into The Darkness.

bseide@ntu.edu.sg



Vibeke Sorensen Professor and Chair, School of Art, Design and Media, NTU

Vibeke Sorensen is a professor and artist working in digital multimedia and computer animation, interactive architectural installation, and visual-music performance. Her work in experimental new media spans four decades and has been published and exhibited worldwide, including in books, galleries, museums, conferences, performances, film festivals, on cable and broadcast television, and on the internet.

vsorensen@ntu.edu.sg
<http://vibeke.info/>



Marijke Van Kets Assistant Professor, School of Art, Design and Media, NTU

As a member of the Belgian cinematographer society, S.B.C., Marijke Van Kets is an internationally acclaimed Director of Photography. Her body of work includes prize-winning feature films, commercials, video clips and her specialty is in stop motion animation films. Currently she is assistant professor in cinematography, 16 mm film and advanced cinematography at ADM, NTU, Singapore.

mvankets@ntu.edu.sg
<http://www.marijke.vankets.net/>

INDUSTRY



Ei-Leen Tan Deputy Director, Science Centre Singapore

Tan Ei -Leen (Singapore) Deputy Director, Physical Sciences at Science Centre Singapore. Dr Tan leads a team that is currently develops materials for a portable dome system, and will be exploring new content areas that would take advantage of the fulldome's immersive environment. Dr Tan will be studying how such environments complement and enhance existing teaching methods.

Ei-Leen_TAN@science.edu.sg
<http://www.science.edu.sg>



Laurent Fabry Director Asia Pacific, Alioscopy

Laurent Fabry has over 20 years experience in media, telecommunication and broadcasting industries. He provides consulting, integration and project management services for digital media projects including media asset management, digital signage and interactive digital media projects. Specialties: Media Asset Management, Digital Asset Management, Digital Signage, Interactive content, System Integration, 3D autostereoscopic, audience measurement, OOH, multi-screen projects.

lfabry@alioscopy.sg
<http://www.alioscopy.com>

SUPPORTED BY

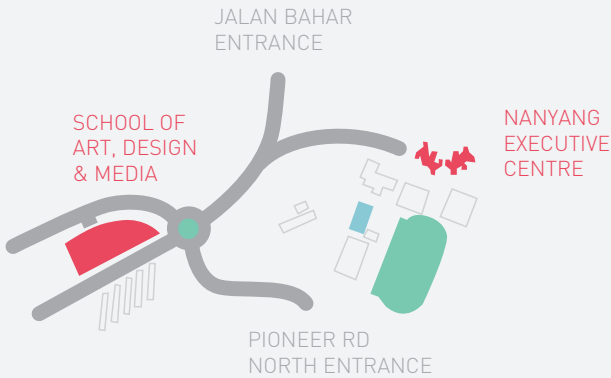


**NANYANG
TECHNOLOGICAL
UNIVERSITY**



Ministry of Education
SINGAPORE

MAP



THE ART OF 3D STEREO MEDIA

WEBSITE

www.artof3dstereomedia.com

SPECIAL THANKS

Alan Chan, Luke Kang Kwong Kapathy, Vibeke Sorensen, Tan Li Ling Michelle, Nadia Thalmann, Ho Qi Yi, Muhammad Mustajab Bin Mohamad, Thummanapalli Nagaraju.

ADM IT SERVICES

Lau Kheng Hock, Kumar Chockanathan, Lim Pheng Yew, Yeong Chen Hui, Tan Wee Liang, Abdul Shukor Bin Mohammad, Arifin Bin Ami

EVENT CO-CHAIR

Ina Conradi, Van Kets Marijke, Lucas Jodogne